



Quick Start Guide

App Version: v1.4.2
Last Revision: 02/03/2021
Created By: Power Pong Dev Team

Table of Contents

Figure 1	Home
Figure 2	Connect to Robot
Figure 3	View All Drills
Figure 4	Edit Drill
Figure 5	Edit Ball
Figure 6	Play Drill
Figure 7	View all Groups
Figure 8	Edit Group
Figure 9	Edit Grouped Drill
Figure 10	Play Group
Figure 11	Change User Settings

Home



Sends you to the Drills page where you can play, edit, or group drills

Sends you to the Connection page where you can manage your connection to the robot

Sends you to the Settings page where you can modify various user settings or reset the app

Figure 1

Connect to Robot

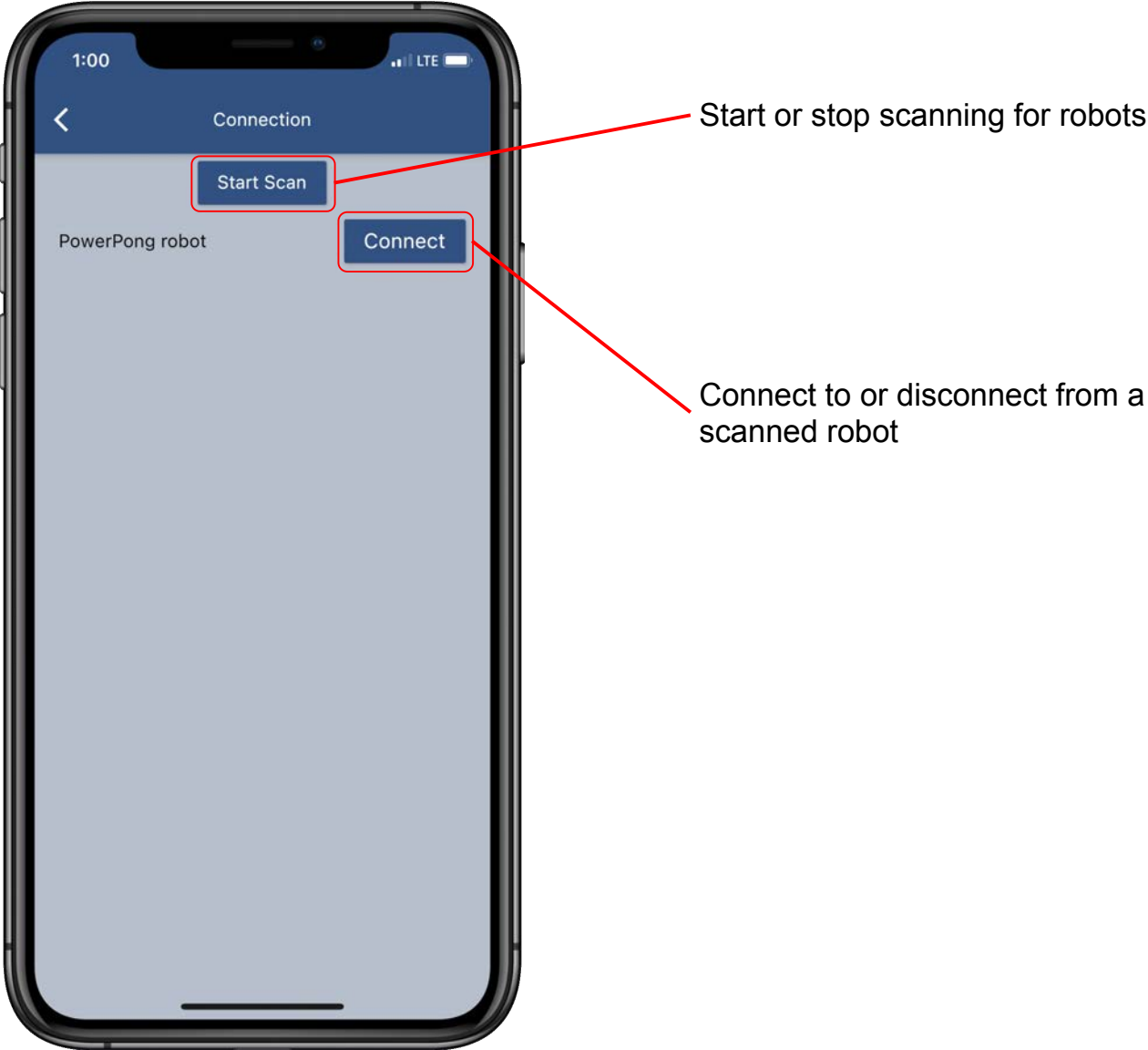


Figure 2

View All Drills

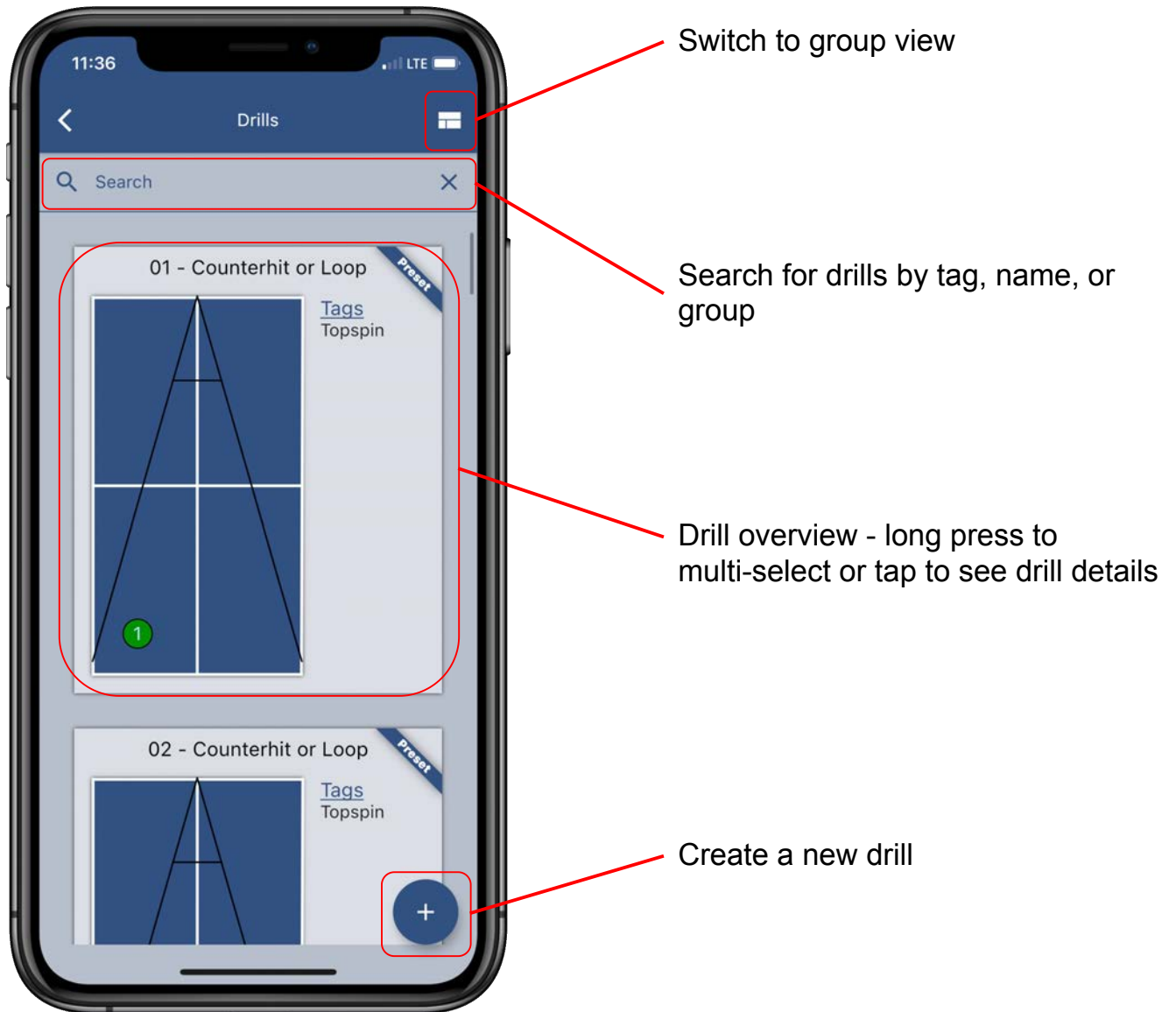


Figure 3

Edit Drill

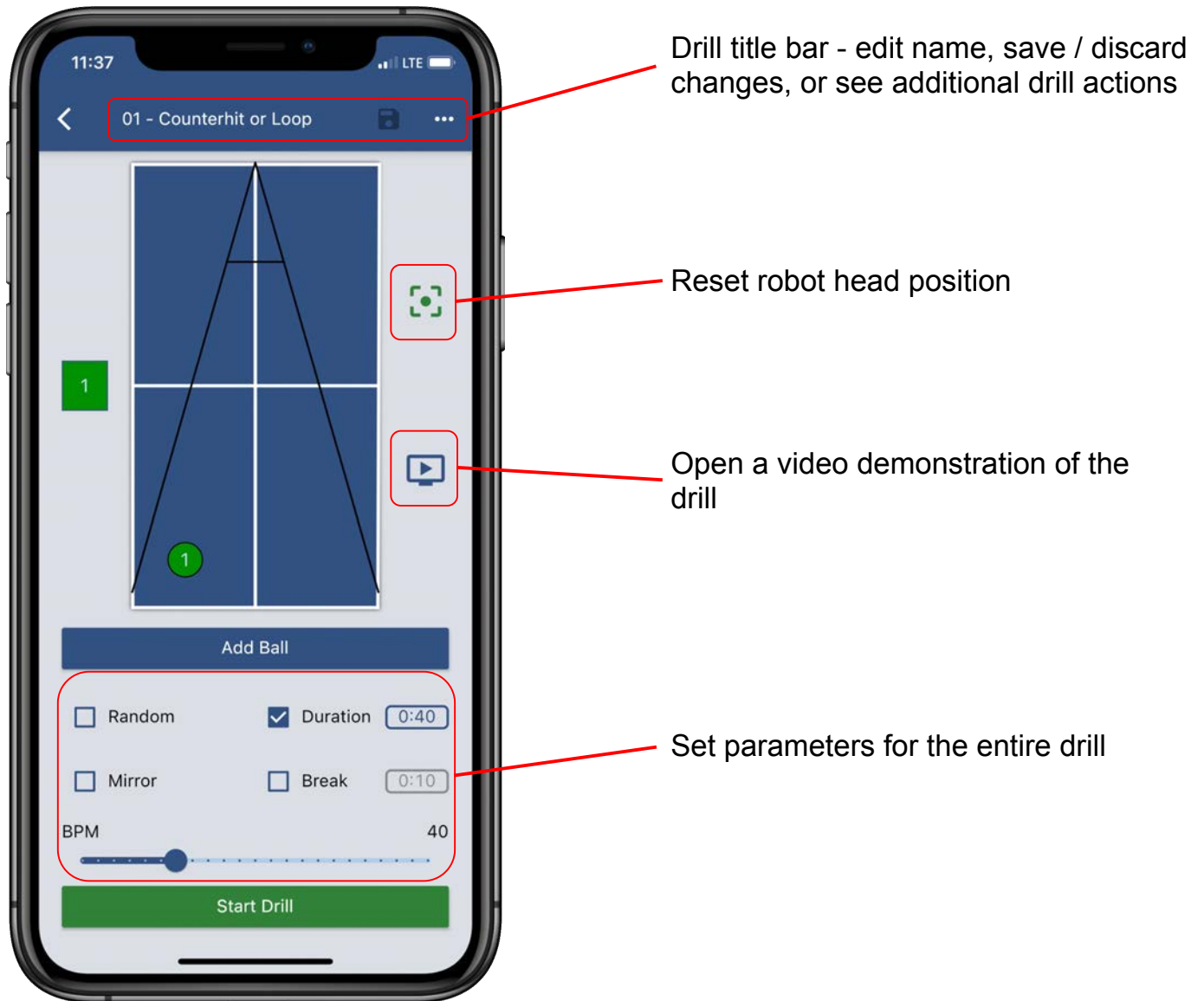
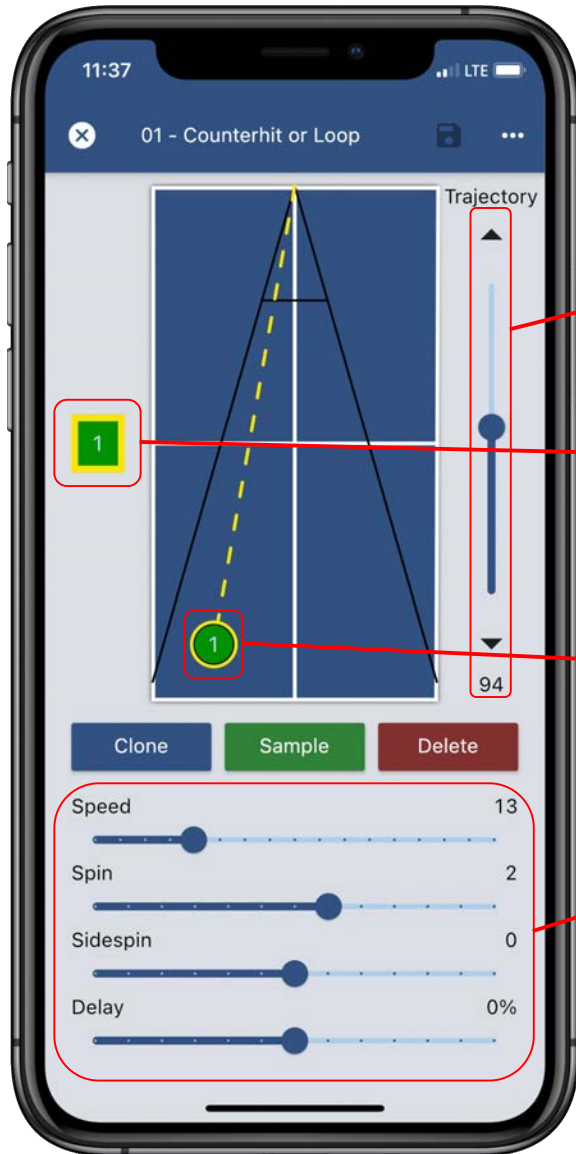


Figure 4

Edit Ball



Modify trajectory - an estimated value is calculated for convenience, but the slider can be manually adjusted for fine tuning

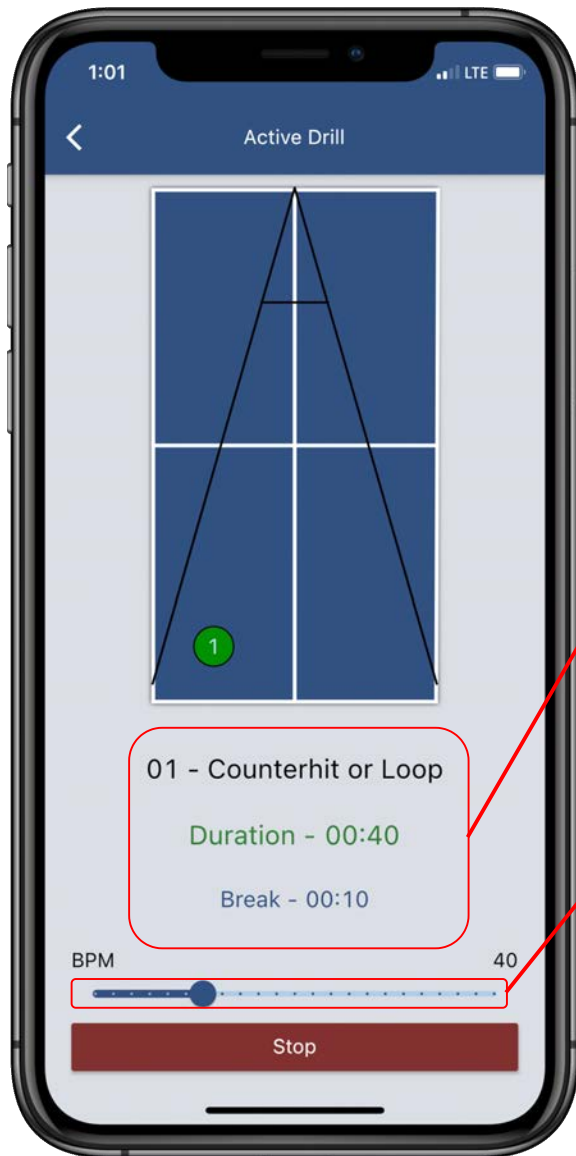
Shows currently selected ball and its order in the drill - with multiple balls, drag to change order

Drag the ball on table to change its position

Set other ball parameters

Figure 5

Play Drill



Current drill information with duration and break timers

Adjust BPM of the drill as it's running

Figure 6

View All Groups

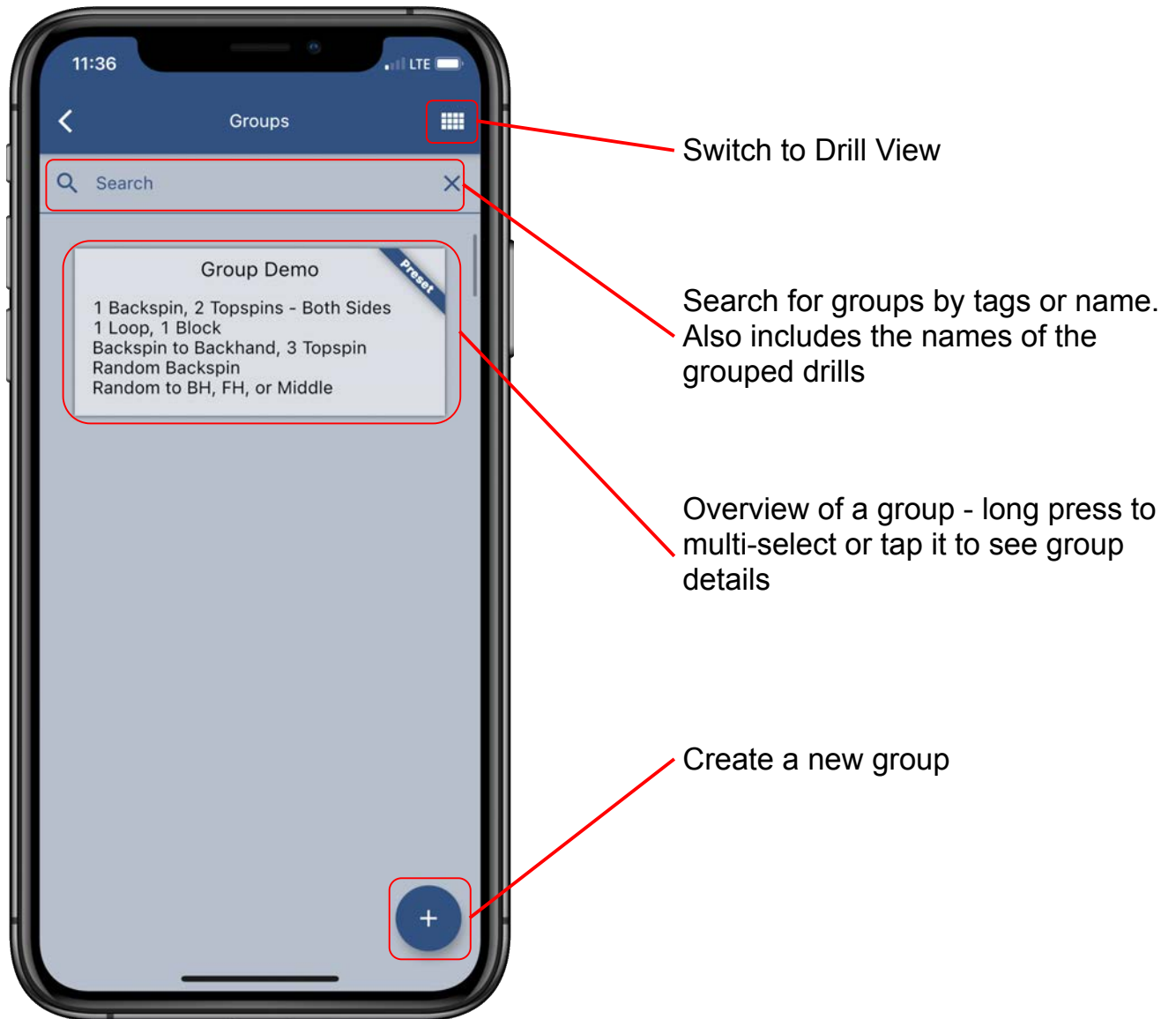
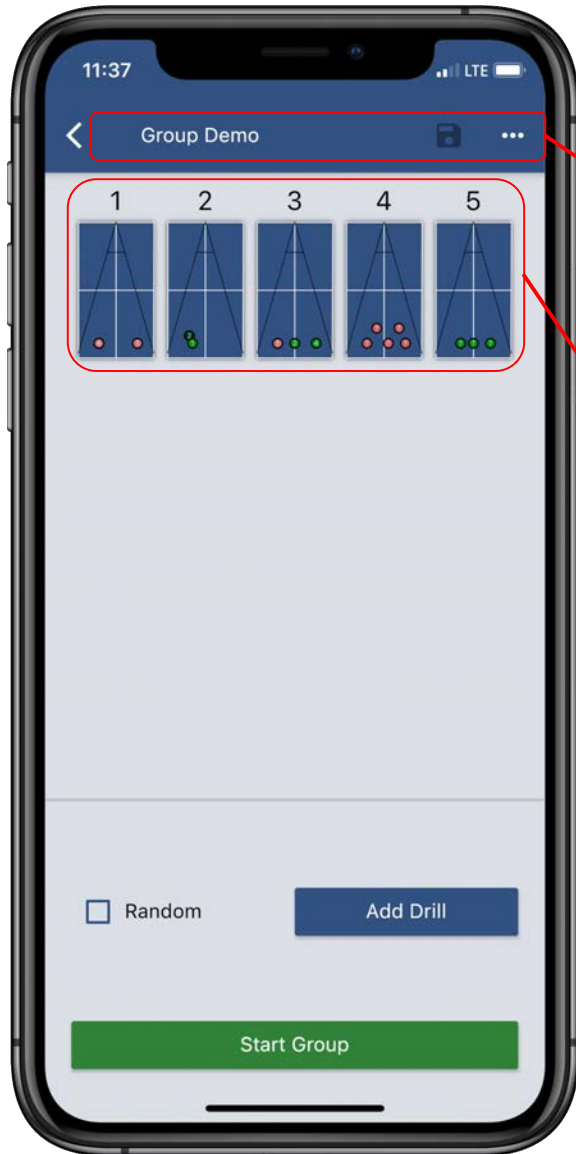


Figure 7

Edit Group

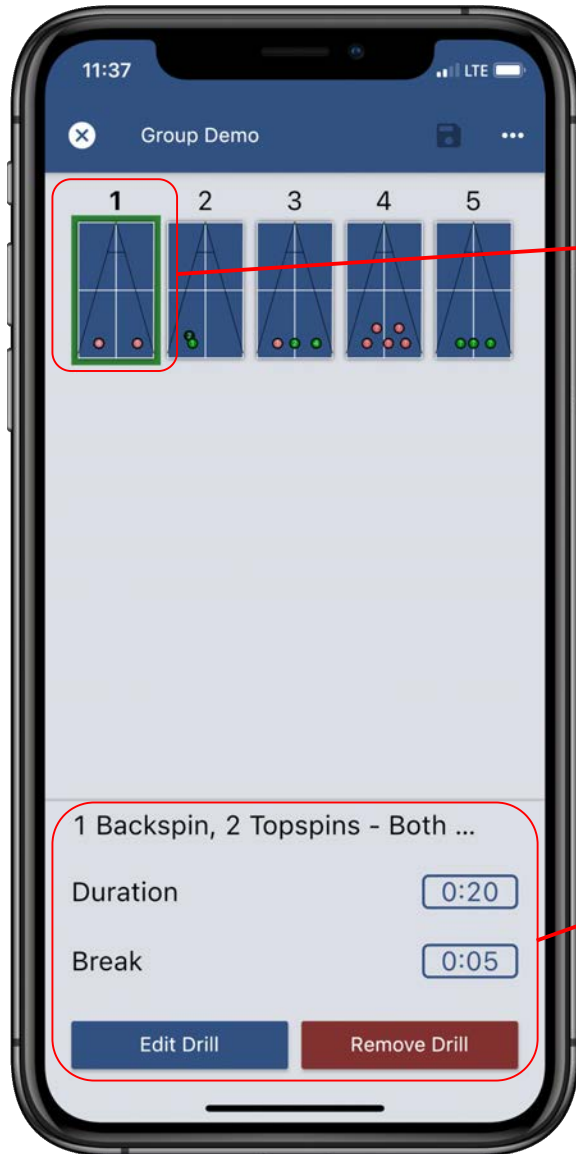


Group title bar - edit name, save / discard changes, or see additional group actions

Overview of drills in this group - tap an icon to see the drill's group settings

Figure 8

Edit Grouped Drill



Currently selected drill - long press to rearrange the drill's order in the group

Modify drill parameters within the group

Figure 9

Play Group

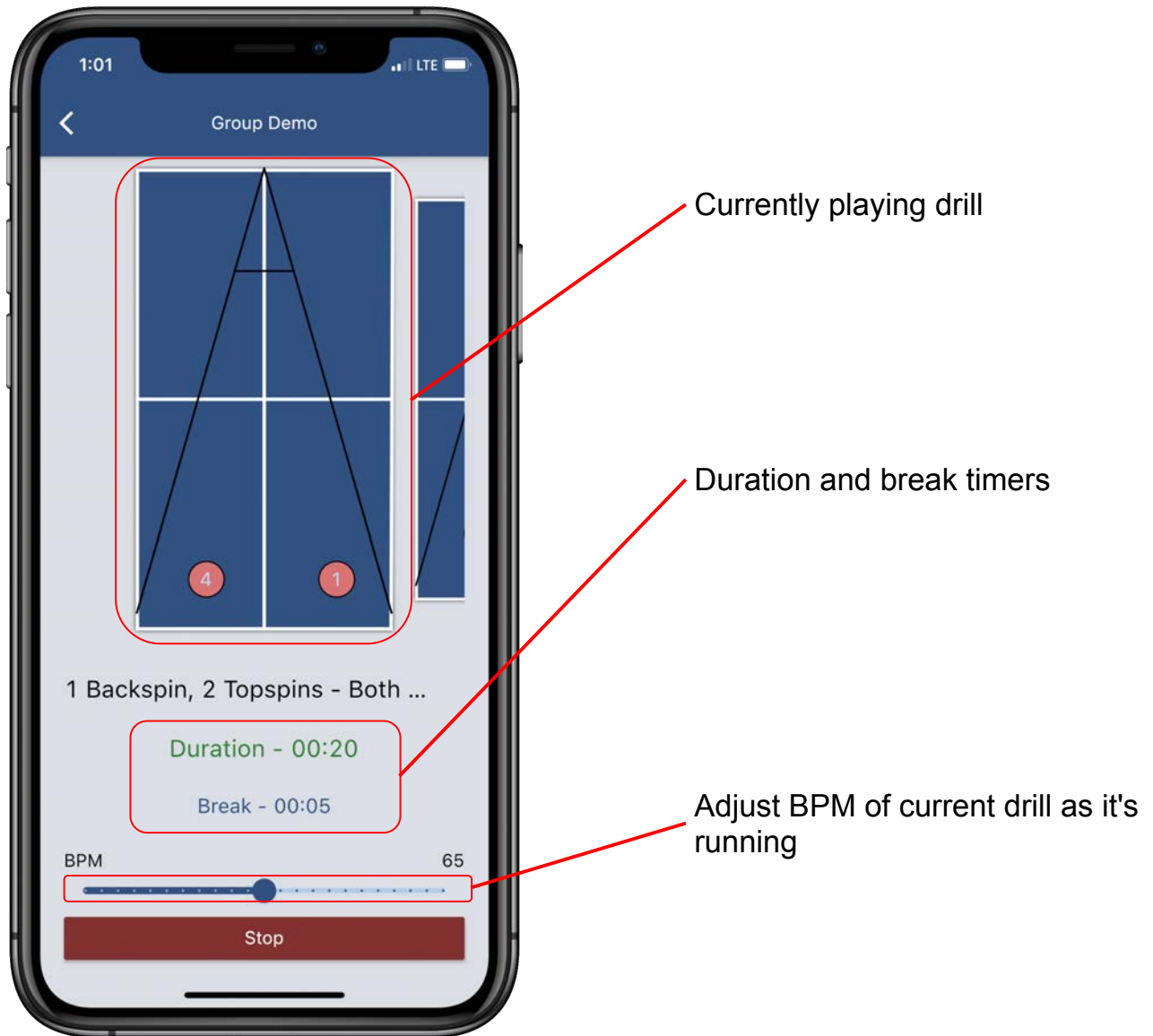


Figure 10

Change User Settings

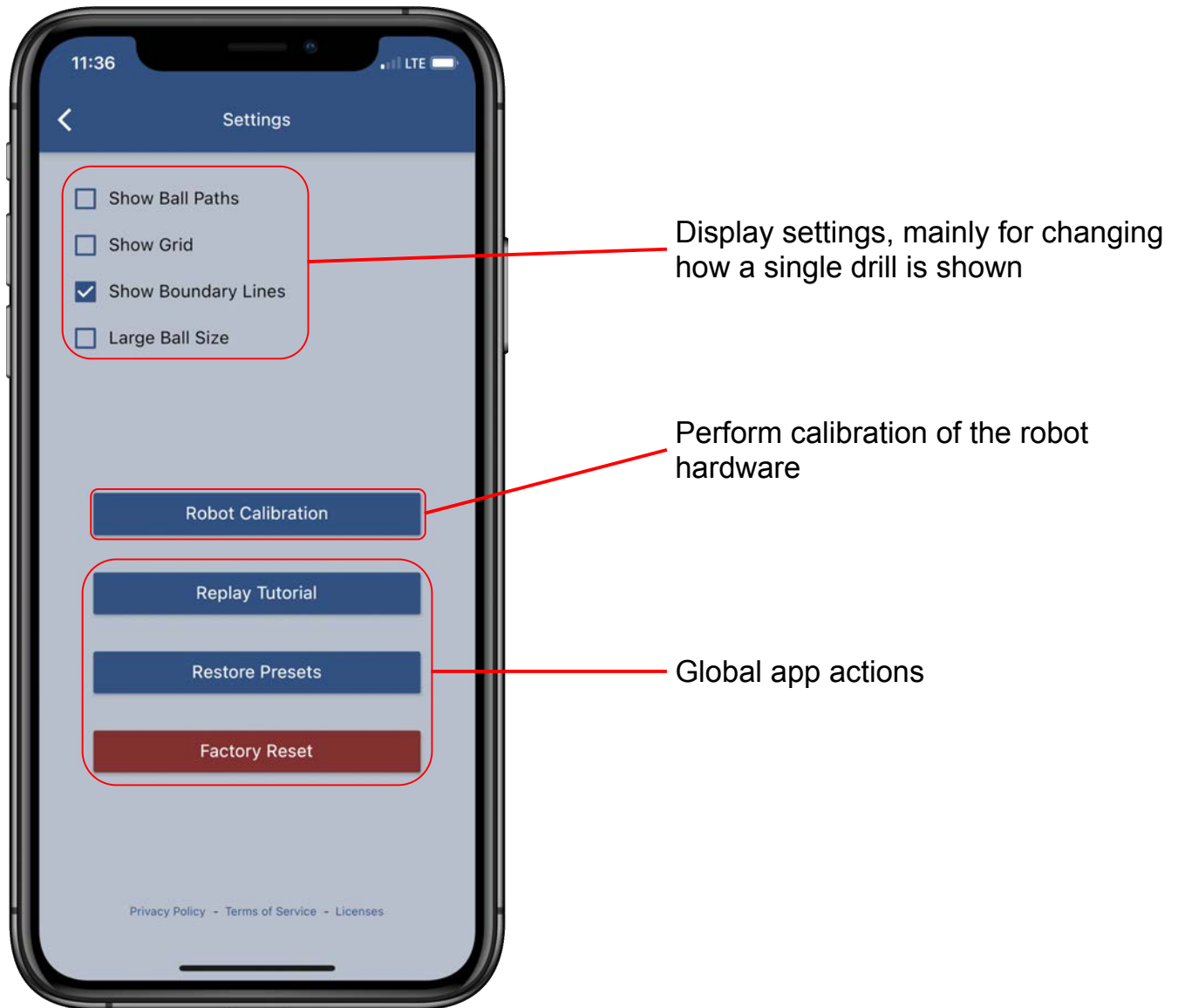


Figure 11