

POWER PONG OMEGA

TABLE TENNIS ROBOT



Developed by Csaba Lukács (LCS.Kft / Hungary)

CE certified!

POWER PONG APP IS DEVELOPED BY THE POWER PONG DEVELOPMENT TEAM

Customer support: support@powerpong.org

SET UP GUIDE

IMPORTANT: Please read instructions carefully prior to use!

Verify All Parts

First, unpack your robot and all parts from the box and verify that everything is present. If a part is missing, please contact us immediately (see front page for contact info)

- Robot
- Balls (U.S. Only)
- Delta Control Box
- 24 V Adopter
- Remote control
- Charging cable
- Velcro pieces
- Spare rubber bands for side net
- Tablet Holder Bracket
- Hex wrenches
- Black tube for wheels adjustment
- White strips to repair deflector plate.

1. Place the robot on top of your table tennis table. Fold apart both sides of the net at the same time. (#1)

2. Loosen the large Black Knob found on the rear of the Ball Tube. Rotate the head of the robot and the support legs out into the position seen in photo (#2).

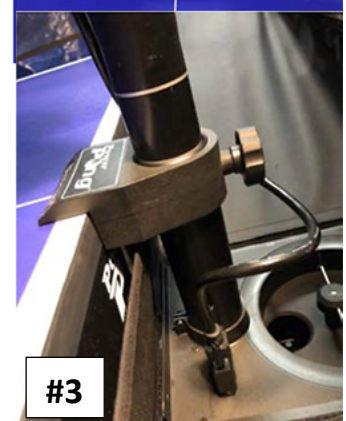
3. Place the robot on the table as seen on photo (#3) The two supporting legs are going under the table and the sticker with the name of the robot is on the top. Connect the cable coming from the head to the serial connector found on top of the Base unit.

4. Hold the pipe under the head with one hand, loosen the knob and pull the head upward until the 2nd silver ring on the tube is aligned with the top of the base unit and then tighten the black knob to hold it in place. (#4)

Be careful so you don't put a dent into the tube when tightening the knob.

5. Standing behind the robot, grip the top points of the net and fold the net down on both sides until the net fully opens.

Please use the included longest Velcro strip to help secure the robot to the end of the table. The Velcro strip may protect the robot from being knocked off the table.



Please note that the Power Pong robots are designed to fit onto 25 mm (1 in.) thick tops, but the supporting legs are designed with heights adjusting screws, so it's adjustable to fit tables with thinner than 25 mm tops. Place the plastic Corner Brackets of the net around the corners of your table as seen in the Photo (#5,6)

6. Pull a Side Net along the sideline of the table and pull its thick rubber band over the top of the table's net. Attach it to the clamp screw that holds the net onto the table. (Photo #7,8)

NOTE: You may attach the two shortest Velcro strips to the corners of your table underneath the Corner Brackets to help the brackets stay down and stabilize the entire net. Ready to use (Photo #9)

8. Connect your control box to the base unit with the thin cable, plug your Power Supply into the power jack on the side of the Base unit, and then into a power outlet. (Photo #10)

9. ADJUSTMENT OF HEAD HEIGHT

On most table tennis robots, the height of the head cannot be adjusted. In contrast, Power Pong Robots offers 4 different heights to better simulate realistic play. It is quite easy to adjust the head height. From behind the net, push the top of the net down to reach over it. Grab the ball tube with one hand and loosen the large black knob with the other hand. You can then pull the tube up or push it down to adjust head height. Lock it in place by tightening the Black Knob.

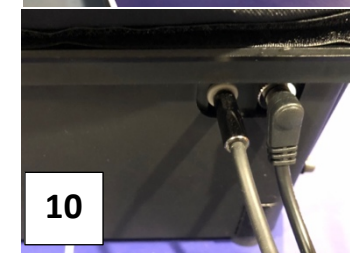
10. POSITION THE HEAD OF THE ROBOT

Loosen the knob and turn the head of the robot if needed to have the balls delivered close to the centerline and about 16 inches from the end of the table. If the balls are delivered longer, then please check if the head of the robot standing straight or bending backward or forward. If everything looks good, but the balls are still coming longer or shorter you might need to calibrate.

CALIBRATION

To calibrate your robot, press both trajectory buttons in the same time and hold it down until it starts. The goal of calibration is to have the balls land around the middle and about 14-16 inches from the end of the table. You may use the trajectory and/or speed buttons to adjust as needed.

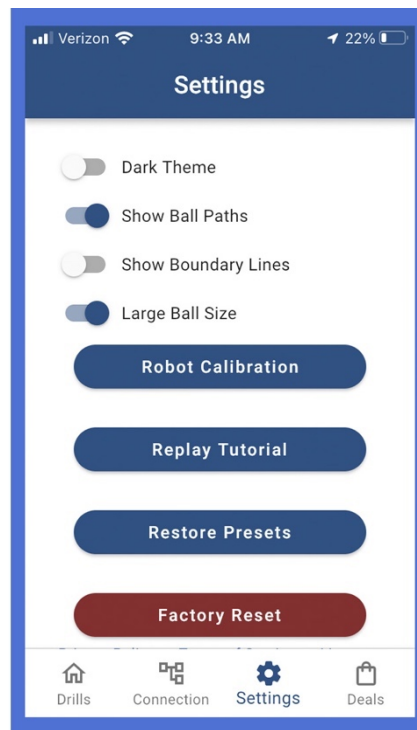
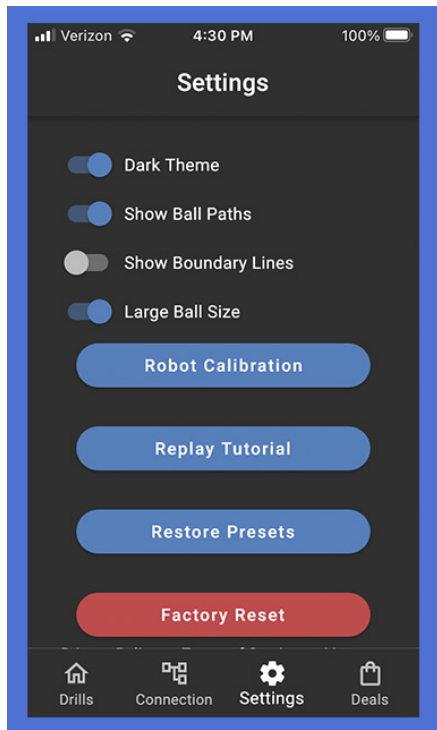
After completing the setup, place 60-100 Power Pong balls into the ball collection tray. Grab your racket and prepare to return balls from your robot.



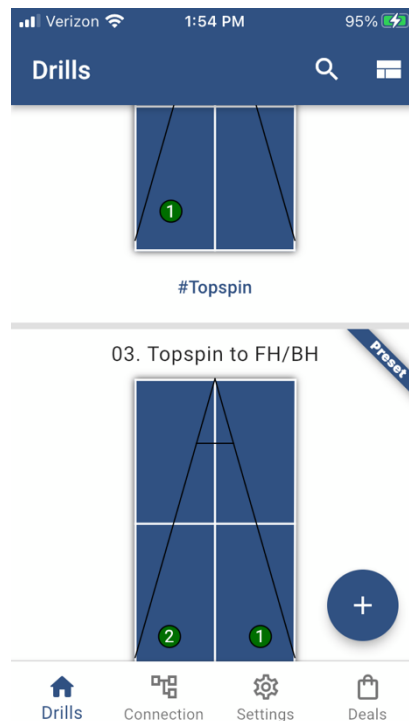
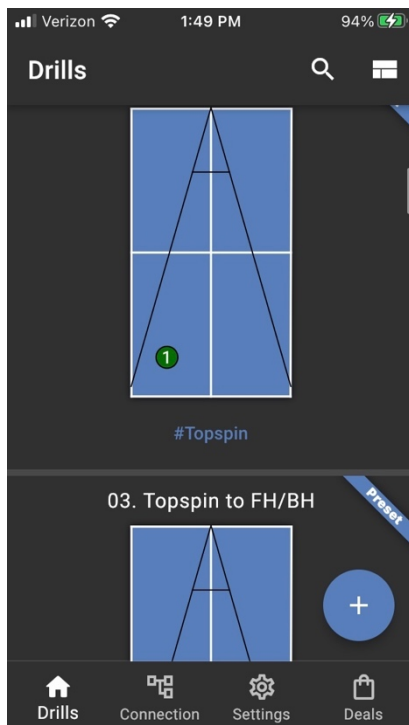
THE POWER PONG APP

DOWNLOAD IT TO YOUR [IOS](#) OR [ANDROID](#) DEVICE

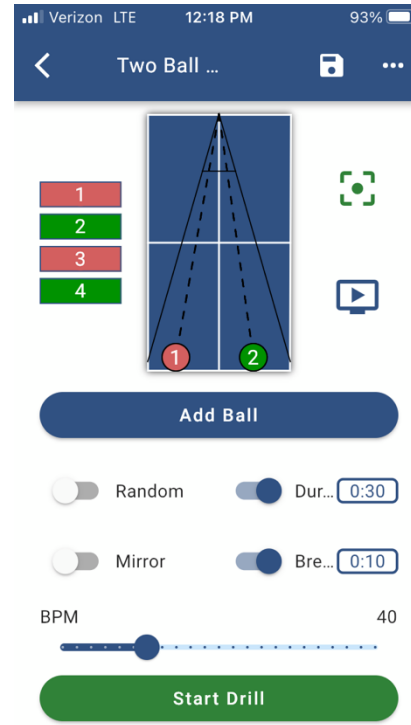
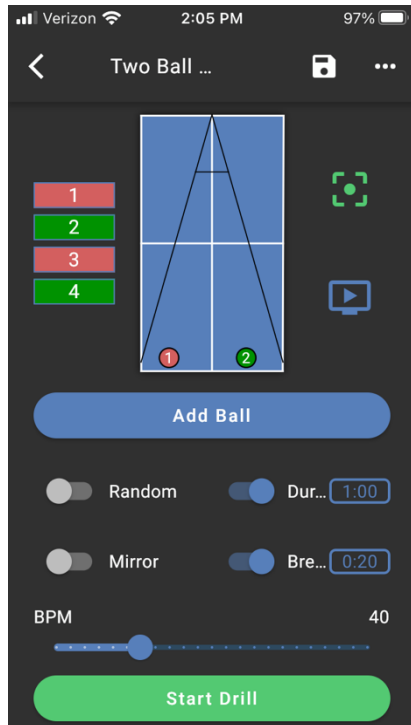
YOU MAY SELECT THE DARK THEME OR LEAVE IT ON THE LIGHT THEME IN SETTINGS



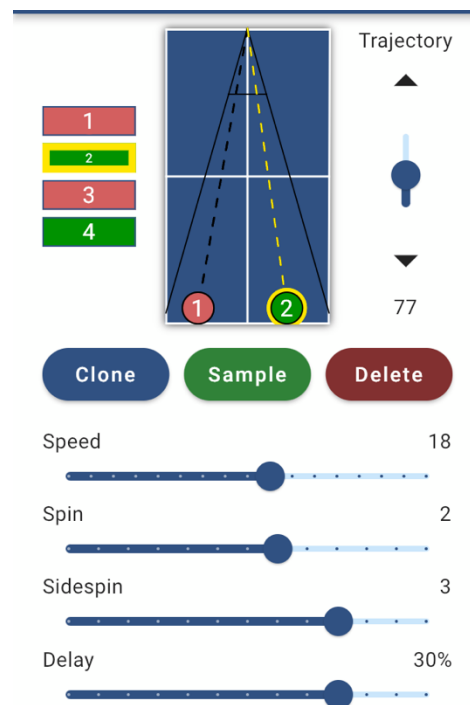
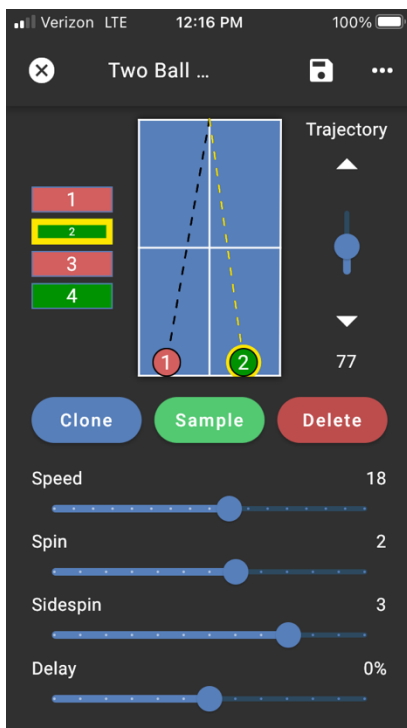
YOU MAY SELECT SIMPLE OR HIGHLY ADVANCED DRILLS ON THE DRILLS PAGE



YOU MAY WATCH THE VIDEO, SET THE DURATION, ADD BRAKE, MAKE IT RANDOM, START THE DRILL OR CLICK ON THE NUMBERS TO MAKE ADJUSTMENTS.



INDIVIDUALLY ADJUST THE SETTINGS OF EACH BALL



IMPORTANT: WHEN YOU'RE ADJUSTING OR SETTING UP YOUR DRILLS, YOU MUST WORK WITH SPIN, SPEED AND TRAJECTORY TO GET THE DESIRED RESULTS.

ADDITIONAL INFORMATION IN OUR QUICK START GUIDE

SAVED DRILLS

	Ball 1	Ball 2	Ball 3	Ball 4	Ball 5	Ball 6	Ball 7	Ball 8
01	F, TS							
02	B, TS							
03	F, TS	B, TS						
04	F, TS	M, TS						
05	B, TS	B, TS	F, TS					
06	B, TS	B, TS	F, TS	F, TS				
07	B, TS	M, TS	B, TS	F, TS				
08	B, E, TS							
09	B, E, TS	M, E, TS	F, E, TS					
10	M, TS, R	F, TS, R	B, TS, R	B, TS, R	F, TS, R	M, TS, R	F, TS, R	
11	B, US							
12	F, US							
13	B, US	M, US	F, US					
14	US, R	US, R	US, R	US, R	US, R	US, R	US, R	US, R
15	M, E, US							
16	E, US, R	E, US, R	E, US, R	E, US, R	E, US, R	E, US, R	E, US, R	E, US, R
17	F, US	F, E, US						
18	F, NS							
19	B, PS							
20	F, PS	B, PS						
21	R, PS	R, PS	R, PS	R, PS	R, PS	R, PS	R, PS	R, PS
22	F, TS, LB							
23	F, TS, LB	B, TS, LB						
24	B,US,LB							
25	B, US, S							
26	LB, US, R	LB, US, R	LB, US, R	LB, US, R	LB, US, R	LB, US, R	LB, US, R	LB, US, R
27	B, SP, S							
28	B, SP, S							
29	NS, S							
30	B, NS, S	F, TS	M, TS					
31	M, NS, S	B, TS	F, TS	M, TS				
32	F, US, S	F, TS						
33	B, US, S	F, TS	M, TS	B, TS				
34	M, NS, S	F, TS	F, TS	M, TS				
35	M, NS, S	B, TS	B, TS	B, TS	F, TS			
36	F, TS	F, TS						
37	B, TS	B, TS						
38	M, US, S	F, US	F, TS	F, TS	F, TS			
39	B, US, S	M, TS	F, TS	B, TS				
40	M, US, S	M, TS	B, TS	F, TS				
41	M, US	M, NS	B, NS	F, NS	F, US	B, US	M, US	
42	M, US	M, US	M, US	M, US				
43	F,US	F,TS	M, US	M, TS	B, US	B, TS		
44	F, US	B, TS						
45	B,US	F,TS	F, US	B, TS				

Abbreviations: FH – Forehand, BH – Backhand, TS – Topspin, US – Under spin, SP – Sidespin, LB – Lob, M – Middle, E – Extreme, R – Random, NS -No spin, PS – Power shot, S - Serve

SETTING UP YOUR OWN DRILLS

Select the placement of the first ball.

Select the type and amount of spin (underspin or topspin)

Test it, and adjust spin speed and trajectory if needed to get the desired results

Push down the button under the second light and repeat the above steps if you want to add additional balls to your drill. You may save your settings by pushing down once the Mem.T button, and selecting an empty slot represented by a flashing number.

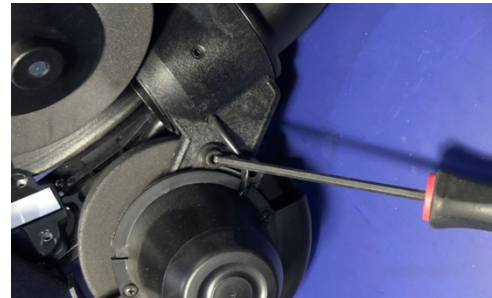
FACTORY RESET

Push and hold down the CLEAR button, turn the power on and release the clear button after about 5 seconds.

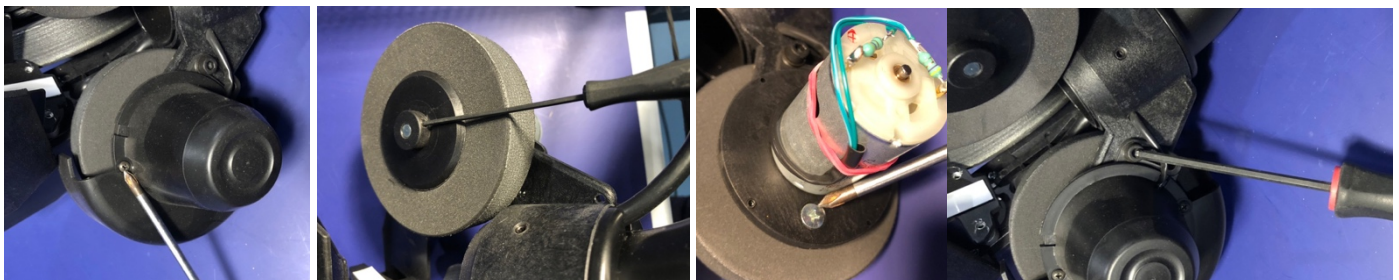
CHANGING THE WHEELS

The wheels are very durable and will last for at least 500 hours, but sooner or later they need to be adjusted or changed. It's time to adjust when the quality of shots produced are not as good as before. It's time to change when the adjustments are no longer working to your satisfaction.

To adjust the distance between wheels, loosen the screw shown on the picture, move all the wheels equally a little closer to give you the same friction as before. Tighten the screw.



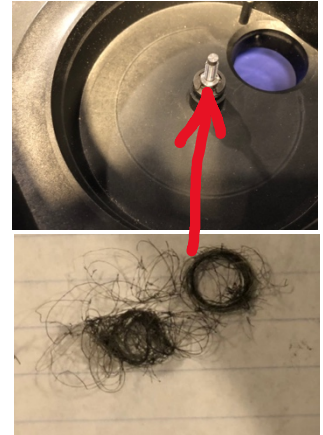
To change the wheels, you need to remove the covers and loosen the screw shown in photo #2 on the bottom wheel, but the screws shown in photo #3 and #4 also needs to be removed in order to change the other 2 wheels.



ERROR MANAGEMENT

Potential problems:

1. No power going into the unit – Check if the power adopter is plugged in all the way. If yes then it could be a bad power adopter or bad circuit board.
2. The feeding motor moves forward and backward – Something blocking the flow of balls. It could be a bad ball or hair wrapped around the axle and at the base of the feeding motor.
3. The feeding motor is not moving at all – Check if power going into the unit, if yes you might need to change the feeding motor.
4. Can't connect to the app – Only the Omega has the Bluetooth connection. Check your IOS or Android device, make sure the Bluetooth connection is on. If yes check with another device, and if nothing works change the circuit board.

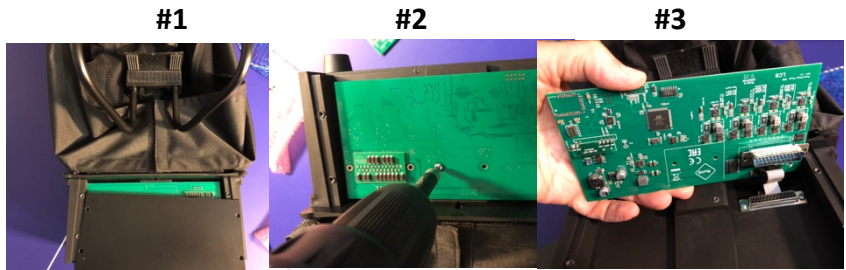


CHANGING THE CIRCUIT BOARD

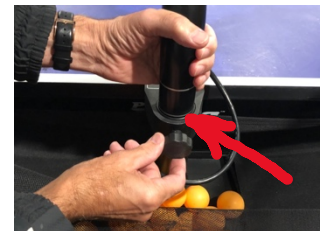
Remove 4 screws from the front
(Photo #1)

Remove 1 screw from the panel
(Photo #2)

Unplug and replace panel
(Photo #3)



5. Two balls are coming out of the robot quickly one after the other – Align one of the silver line on the tube with the top of the base unit.
6. The balls are suddenly being delivered irregularly and with varying length - Make sure the connecting cables are fully connected, and there are no loose connections. The Omega has one connection, and robots with control box have 3 connections.



FOR ADDITIONAL ASSISTANCE PLEASE EMAIL TO: support@powerpong.or

Technical Data

Mains Power Supply: 100-230V, 50-60 Hz transformer, approximately 40 W

The robot should only be operated indoors within a temperature range of 0-40°C. Weight: 6 kg (with net)

Overall dimensions (with net): Height 0.75m; Width 0.28 m; Depth 0.25 m

The electrical adapter device was subject to a test for the approval of electrical appliances and was found to conform to the standard outlined below:

Conformity with the Low Voltage directive 73/23/EEC

As last amended by EEC Directive 93/68/EEC

Registration No.: AN 50091861 0001 Report No.: 17004848 001

As is evident from Test Report

Nos. NTEK-2010NT1115351E and NTEK-2010NT1115353SS

As a result of these test reports the Power Pong Delta is permitted to bear the CE trademark.

Made in Hungary, designed by Csaba Lukács Further product information available on request.

